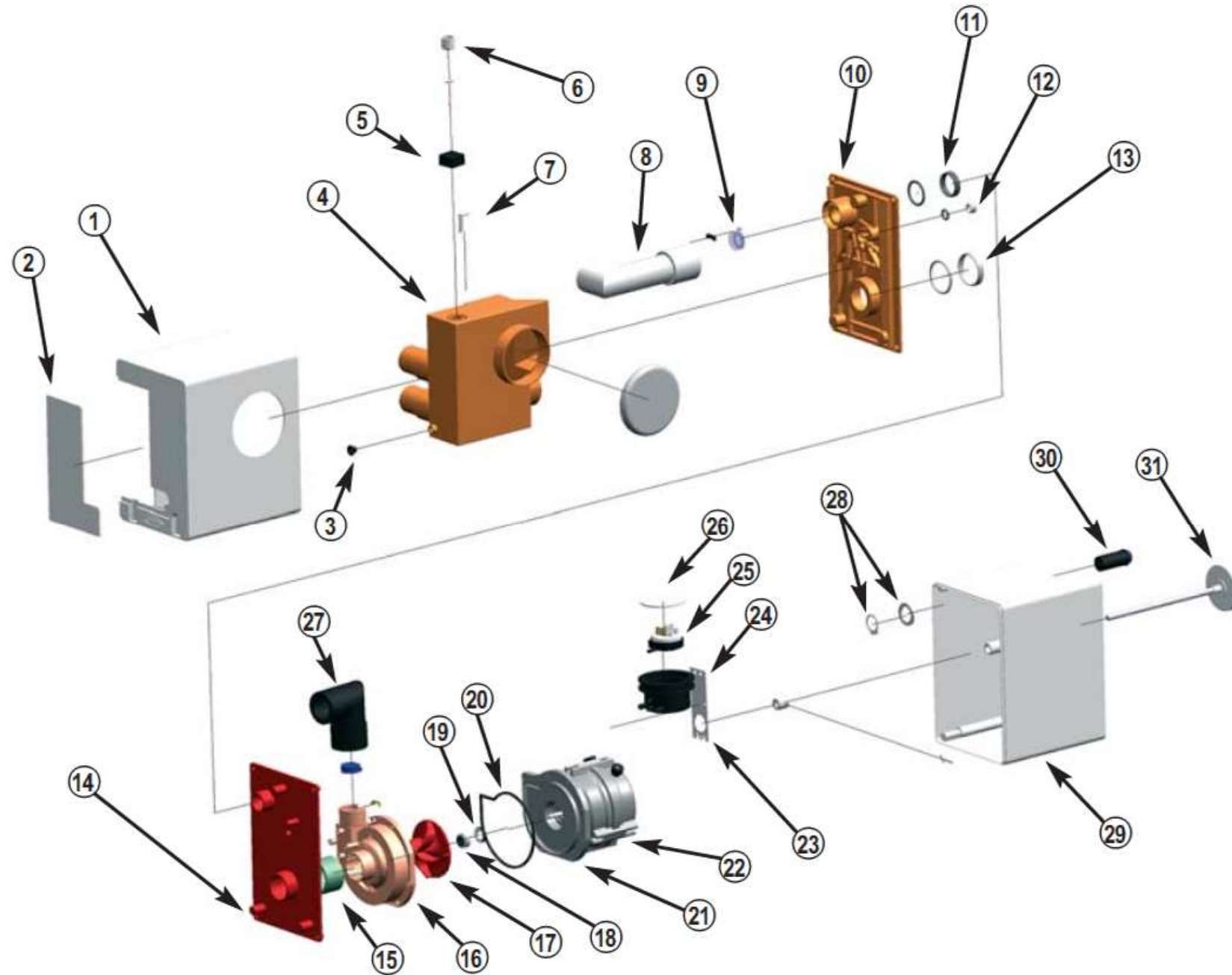


SaniSplit Exploded Diagram



1. Tank plastic box
2. Lateral door
3. Tank rubber cap
4. Rubber tank
5. Air Passage
6. Rubber Tank Inspection Cap
7. Pipe for switch air passage
8. Discharge rubber pipe
9. Outlet one way valve
10. Connection cap of tank plastic box
11. Discharge pipe seal
12. Knob nut
13. Seal for pump connection
14. Connection cap of pump plastic box
15. Rubber coupling for connection to the pump
16. Plastic cover with steel cutters
17. Impeller
18. Rotary seal
19. Ceramic seal
20. Rubber seal between plastic flange and cover
21. Plastic flange
22. Motor
23. Switch box support
24. Switch rubber box
25. Switch
26. Cap of switch box
27. Rubber coupling for connection to the discharge pipe
28. Manual button support
29. Pump plastic box
30. Manual start-up button
31. Knob